



Glenorchy  
School

TERM 4  
ISSUE 1  
13TH OCTOBER  
2020

## Term 4

### Dates

15th October

**Shake Out Day**

22nd October

**BOT Meeting**

23rd October

**Teacher Only Day**

26th October

**Labour Day**

28th October

**Wakatipu Zone  
Triathlon**

6th November

**PTFA Ball**

16th November

**Teacher Only Day**

17th November

**Safe Biking &  
Walking**

3rd December

**Boys Cricket**

10th December

**BOT Meeting**

15th December

**Prize Giving**

## School News

**We had two New Entrants start their school days at Glenorchy School yesterday.** Welcome to Ollie who joins his brother Lucas in the Junior Room, and also to Haven who has recently moved to Glenorchy.

**This Thursday is the Great New Zealand Shake Out Day.** At 9:30am, along with many other New Zealand Schools and businesses, we will be going through our Earthquake Drill. In the event of a strong earthquake taking place in Glenorchy, our emergency procedure requires us to evacuate from the school to higher ground. Our meeting point is at the Bible. We will also do this either on Thursday or Friday afternoon, leaving school at 1:30pm.

**At the end of last term the children completed a writing task where they wrote about what they liked about living in Glenorchy.** These are displayed at Mrs Woolly's General Store. Thank you to Mrs Woolly's for donating the beautiful sweatshirts to the children for their efforts.

**We would also like to thank Queenstown Mitre10 Mega for donating the Getting Kiwi Kids into Gardening Starter Pack valued at \$275** which included an assortment of products that will be useful in the school enviro garden.

**Thank you to everyone who came and helped plant native trees on the BoardWalk.** It was a great way to finish the term.

**This term we have two further Teacher Only Days planned.** The first day is on Friday 23rd October, which means an extra long Labour Weekend for families. The second day is Monday 16th November. Glenorchy School will be closed for students on these two days.

**Many of our sporting events this year have been cancelled due to Covid-19 Alert Level restrictions.** Hopefully, the events planned for this term (triathlon and orienteering) are able to proceed. The first of these is the Wakatipu Zone Triathlon on Wednesday 28th October. There are a number of Senior Room children who are keen to participate in this event. Further information will be sent out to those who have indicated they wish to attend.

On Friday 13th November our Year 4 - Year 8 students will attend the Science RoadShow at Queenstown Primary School. We will require parent support to provide transport and supervision at the event. More information will be sent out closer to the time.

**There are a number of building projects underway at the school and we are looking forward to their completion, which will hopefully be very soon.** We have been very impressed with how well the children have continued with their learning while taking care and being aware of the extra people and hazards around the school.

### Student of the Week

	Junior Room	Senior Room
Week 9	<b>Connie</b> - For her perseverance during reading.	<b>Iiana</b> - For consistently being on task and trying her best in the Senior Room.
Week 10	<b>James</b> - For being a kind, responsible member of the Junior classroom who happily helps everyone.	<b>Baxter</b> - For the effort and persistence he showed during our candle art topic.

Paula, Nicole, Courtney and Gorettie

## I Like Living in Glenorchy Because...



Living in Glenorchy is one of the best things in my life, from all the activities to the amazing Community, Glenorchy is a wonderful place.

When I'm going around Glenorchy after an awesome day at school I think to myself I am very privileged to live here. The scenery is one of the best things here.

The snow capped mountains and the amazing beach Forests liven Glenorchy up a lot.

There are heaps of tourist attractions. Horse trekking is a really popular activity around Glenorchy. Walking tracks are amazing around Glenorchy and if you fancy a swim, there is a community pool or you could go into lake Wakatipu.

For a fun way to plunge into the depths you could jump off the local wharf.

Next to the wharf is one of Glenorchy's most iconic landmarks "The Red Shed". If you enjoy hunting or fishing, there are many areas around Glenorchy that are prime spots.

By, Toby

12 years

## I Like Living in Glenorchy Because ...



I love living in Glenorchy because every day when I go for a ride on my beloved horse I get to go for big adventures and rides with my friends and family, like around the river flats and up the beautiful green hills and mountains that surround the small town of Glenorchy.

One thing that I love is the Community for it is very friendly and nice and is very welcoming towards new comers and tourists that come to see the gorgeous scenery or go on one of Glenorchy's well known tourist attractions such as Dar River or High Country Horses.

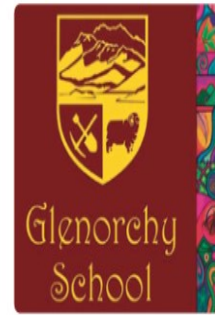
Some of my favourite activity to do are taking my horse swimming in the sparkling still lake on a hot summers day and jumping off the old wooden wharf where the Earnslaw used to dock back in the old days when the Glenorchy road had not been built.

At the end of the wharf stands the Historic "Red Shed" that is a common destination for tourists and locals who want to learn a bit about GY's history. So if you ever get the chance to come to Glenorchy, I hope you have a great day and enjoy your stay.

By, Sadie

12 years





Thanks to our generous donors, the Wakatipu Community Foundation has **granted over \$600,000 into the community** this year including supporting Wakatipu primary schools to **fund a counsellor for the next 3 years**. We were also able to grant \$70,000 to local schools, including **\$2,000 directly to Glenorchy School**, to support teacher and student needs during these challenging times. Please contact us to learn more about how you can join us to give back to the home you love.

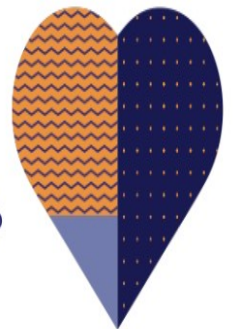
**Your community. Your legacy. For good.**

Do you like to support **charitable causes** close to your heart?



September is  
Wills Month  
→ & Trusts

Show your love locally.



Your Community. Your Legacy. For Good.

Add the **Wakatipu Community Foundation** to your new or existing will with our partner law firms. Also, with new trust laws coming into effect, it is a good time to visit with your professional advisors to see if the Wakatipu Community Foundation can assist with the resettling of your trust. We invest and protect donations so they can grow and earn income that supports our community, for good. We make it easy for you to impact the community you love, **now and forever**. Please visit our website for a list of partner firms.

 [www.wakatipucommunityfoundation.org](http://www.wakatipucommunityfoundation.org)

 [info@wakatipucommunityfoundation.org](mailto:info@wakatipucommunityfoundation.org)



# Trash N Treasure & Family Fun Day!



plunket  
whānau āwhina

**Saturday 17<sup>th</sup> October**  
**10am- 2pm**

**@ Lake Hayes Pavilion.**

*Gold coin donation entry.*

***Free family play & entertainment,  
sausage sizzle, bake stall &  
the opportunity to grab a  
bargain from the stalls!***



***This year ONLY \$15 per table for Personal stalls  
or \$25 per table for businesses!***

*To book a table to sell your pre-loved or new baby/child friendly items*

*Contact Queenstown Plunket on 03 442 7380  
or email [queenstown.plunket@plunket.org.nz](mailto:queenstown.plunket@plunket.org.nz)*

*\*PLEASE NOTE: This event will only run during Alert Level 1\*  
Keep an eye on the Wakatipu Facebook Page for updates!*



GREAT

GLENORCHY

Getaway DAY

LABOUR WEEKEND  
SUNDAY  
25 OCTOBER  
9AM - 6PM

Support Local

COME AND EXPLORE YOUR OWN  
BACKYARD THIS LABOUR WEEKEND

MARKET  
STALLS

LIVE  
MUSIC

FACE  
PAINTING

"KISS  
THE GROUND"  
MOVIE

LOCAL BEER  
AND WINE  
TASTING

FOOD  
TRUCK

"WASTE  
FREE WANDA"  
SHOW

UP TO  
25% OFF  
ON ACTIVITIES  
IN GLENORCHY

AMAZING  
DEALS  
GLENORCHY WIDE

SALE  
AT  
MRS WOOLLY'S



SUNDAY 25 OCTOBER

9am - 5pm Mrs Woolly's General Store open for great coffee, delicious fresh bakes, and a store-wide sale with items up to 60% off

11am - 3pm Market stalls outside Mrs Woolly's General Store

11am - 3pm Delicious bao buns from Mrs Woolly's Food Truck outside Mrs Woolly's General Store

11am - 3pm Market stalls outside Mrs Woolly's General Store

11am - 3pm Glenorchy Brew Co and Coal Pit Wine - Local beer and wine tasting

11am & 1pm Camp Glenorchy Tours - find out more about the local and international art and sustainability features at NZ's most sustainably designed eco retreat

11am - 2pm Kids face painting with The Paint People

12pm - 2pm Live music from Lisa Cruickshank

2pm - 3pm "Waste Free Wanda" Show at Camp Glenorchy - A dynamic one-woman musical on how we can reduce our single-use waste. Perfect for kids and parents!

4pm - 5:30pm Screening of the documentary "Kiss the Ground" at Camp Glenorchy - an inspiring and groundbreaking film that reveals the first viable solution to our climate crisis

6pm - Dinner time! Grab a bite at one of the restaurants in Glenorchy

ALL WEEKEND - AMAZING DEALS Glenorchy-wide!  
Helicopter flights, horse riding, ziplining, 4WD tours, hiking gear hire, car relocation, packrafting tours, hunting tours, lunch and dinner deals, and more!

GLENORCHY  
NEW ZEALAND  
HEAD OF THE LAKE, HEART OF THE MOUNTAINS

Find out more on  
[www.GreatGlenorchyGetawayDay.co.nz](http://www.GreatGlenorchyGetawayDay.co.nz)  
Glenorchy, New Zealand